








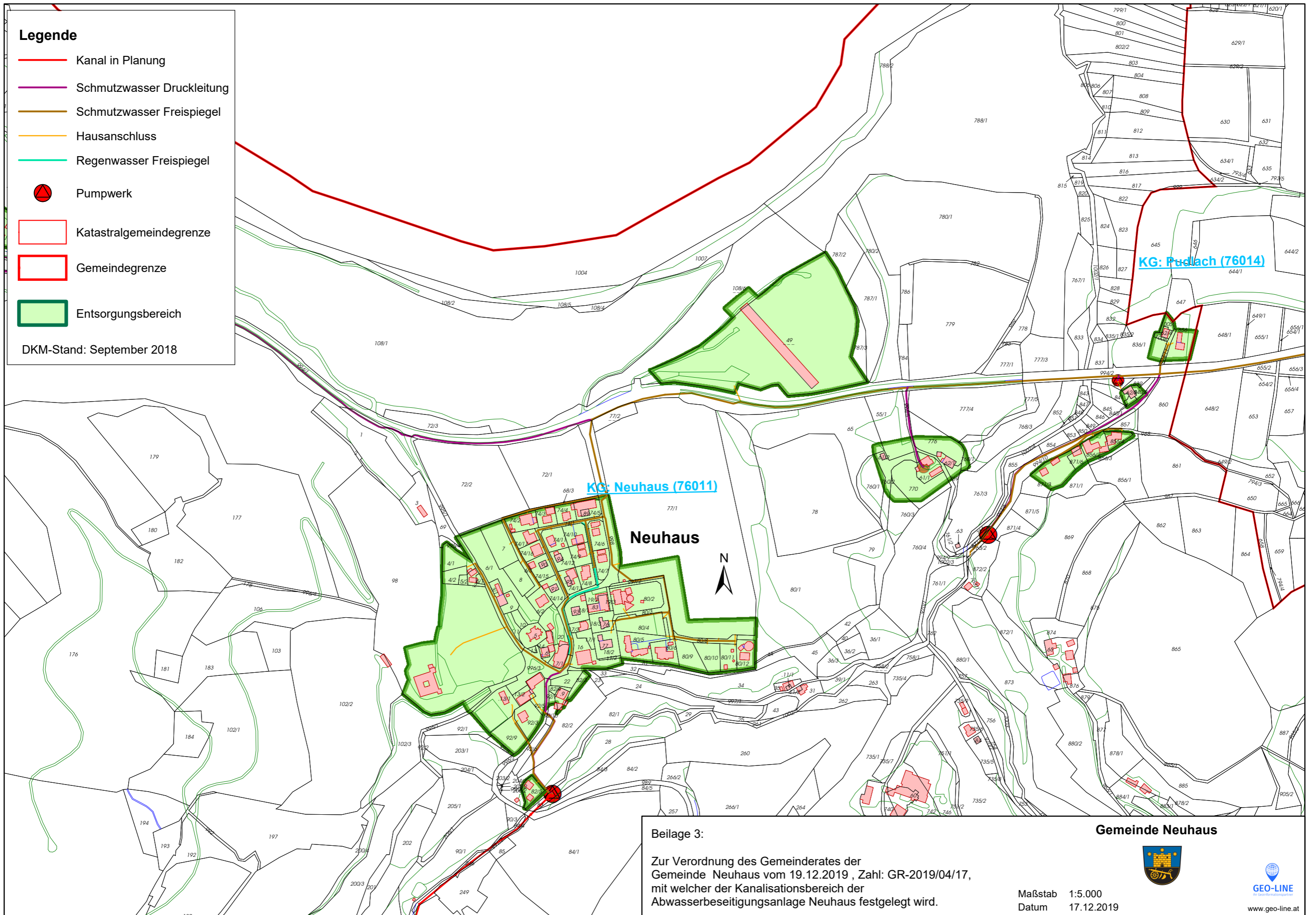


### Legende

-  Kanal in Planung
-  Schmutzwasser Druckleitung
-  Schmutzwasser Freispiegel
-  Hausanschluss
-  Regenwasser Freispiegel
-  Pumpwerk
-  Katastralgemeindengrenze
-  Gemeindegrenze
-  Entsorgungsbereich

DKM-Stand: September 2018



### Beilage 3:

Zur Verordnung des Gemeinderates der  
Gemeinde Neuhaus vom 19.12.2019, Zahl: GR-2019/04/17,  
mit welcher der Kanalisationsbereich der  
Abwasserbeseitigungsanlage Neuhaus festgelegt wird.

Gemeinde Neuhaus



Maßstab 1:5.000  
Datum 17.12.2019