

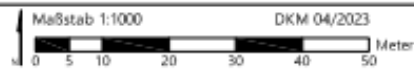


Marktgemeinde Griffen

Integrierte Flächenwidmungs- und Bebauungsplanung "Gewerbstandort Griffen Süd"



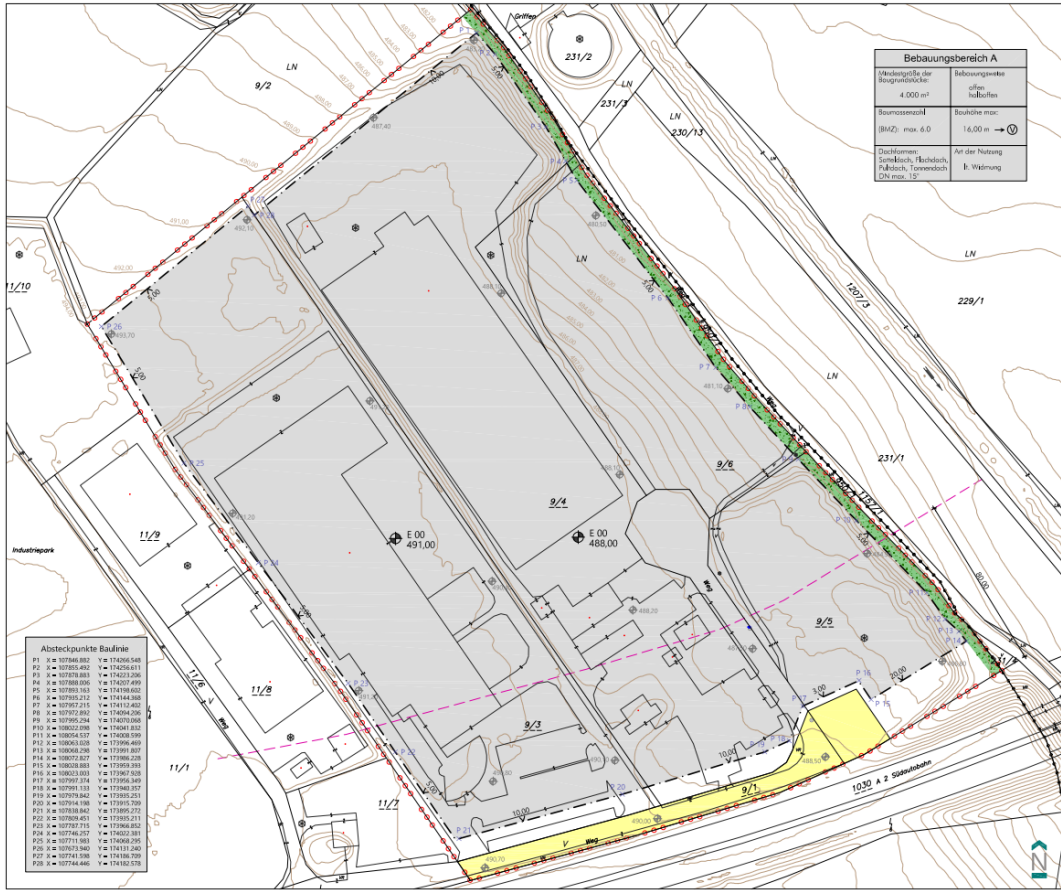
Anlage 1 - Umwidmungslageplan 4/2024



Bearbeitung: FAL/TRÖ Datum: 15.07.2024 Plannummer: 24007-LP-4/2024

| | Umwidmung von | Umwidmung In | KG | Grundparzelle | Ausmaß in m ² |
|-----------|---------------------------|---------------------------|--------------------|---------------|--------------------------|
| 4a | Allgemeine Verkehrsfläche | Bauland Gewerbegebiet | Griffnerthal 76307 | 9/1 tlw. | 2.054 |
| 4b | Bauland Gewerbegebiet | Allgemeine Verkehrsfläche | Griffnerthal 76307 | 9/5 tlw. | 695 |
| | | nicht umgewidmete Flächen | Griffnerthal 76307 | 9/1 tlw. | 2.034 |
| | | | | 9/3 | 29.957 |
| | | | | 9/4 | 30.929 |
| | | | | 9/5 tlw. | 9.340 |
| | | | | 9/6 | 10.576 |
| | | | | | 85.585 |

| | | | |
|---------------------|-------|-----------------------|--|
| Kundmachung | | Genehmigungsbeschluss | |
| von: | bis: | vom: | |
| Genehmigungsvermerk | | | |
| vom: | Zahl: | | |



| Bebauungsbereich A | |
|--|---------------------------------------|
| Überbaufläche der Bruttofläche | Bebauungsweite oder Halbflächen |
| 4.000 m ² | |
| Baumassenschl | Bauhöhe max. |
| (BAG) max. 6.0 | 16,00 m → |
| Zustimmung: | Auf der Natur |
| Sandwisch, Flachdach, Flachdach, Tonnendach DN max. 12 | I: Widmung |

| Absteckpunkte Baufurine | |
|-----------------------------------|--|
| P1 X = 107546.852 Y = 174206.548 | |
| P2 X = 107555.402 Y = 174206.611 | |
| P3 X = 107558.883 Y = 174207.006 | |
| P4 X = 107560.894 Y = 174207.949 | |
| P5 X = 107563.563 Y = 174198.602 | |
| P6 X = 107565.212 Y = 174184.568 | |
| P7 X = 107567.215 Y = 174152.402 | |
| P8 X = 107572.862 Y = 174054.956 | |
| P9 X = 107595.234 Y = 174020.068 | |
| P10 X = 108022.698 Y = 174041.812 | |
| P11 X = 108054.537 Y = 174008.939 | |
| P12 X = 108063.628 Y = 173996.469 | |
| P13 X = 108068.298 Y = 173991.807 | |
| P14 X = 108072.827 Y = 173986.226 | |
| P15 X = 108028.883 Y = 173993.938 | |
| P16 X = 108023.853 Y = 173992.517 | |
| P17 X = 107997.214 Y = 173995.349 | |
| P18 X = 107991.153 Y = 173992.517 | |
| P19 X = 107979.262 Y = 173995.253 | |
| P20 X = 107964.363 Y = 173995.709 | |
| P21 X = 107948.862 Y = 173995.211 | |
| P22 X = 107938.451 Y = 173995.211 | |
| P23 X = 107927.918 Y = 173986.862 | |
| P24 X = 107746.237 Y = 174002.881 | |
| P25 X = 107711.983 Y = 174008.991 | |
| P26 X = 107673.940 Y = 174131.240 | |
| P27 X = 107741.980 Y = 174136.709 | |
| P28 X = 107744.446 Y = 174182.578 | |

 Marktgemeinde Griffen

Integrierte Flächenwidmungs- und Bebauungsplanung
„Gewerbestandort Griffen Süd“
Zeichnerische Darstellung der
festgelegten Bebauungsbedingungen

- ● ● ● Geltungsbereich
- Baufurine ohne Anbauverpflichtung
- Überbaubare Fläche im Bauland Gewerbegebiet
- Verkaufsfäche mit Straßenbegrenzungslinien
- Bepflanzungsgebiet für die Randbegrenzung

- Sonstige Darstellungen
- 1257 Kataster
 - KG Grenze
 - Verweis auf den Wortlaut der Verordnung
 - + Maßstab in Meter
 - + in Metern über Adria (KagG)
 - x P 1 Koordinatenpunkte der Baufurine (GK M31)

Betroffene Parzellen: 9/1, 9/3, 9/4, 9/5, 9/6, 9/7, 9/8, 9/9, 9/10, 9/11, 9/12, 9/13, 9/14, 9/15, 9/16, 9/17, 9/18, 9/19, 9/20, 9/21, 9/22, 9/23, 9/24, 9/25, 9/26, 9/27, 9/28, 9/29, 9/30, 9/31, 9/32, 9/33, 9/34, 9/35, 9/36, 9/37, 9/38, 9/39, 9/40, 9/41, 9/42, 9/43, 9/44, 9/45, 9/46, 9/47, 9/48, 9/49, 9/50, 9/51, 9/52, 9/53, 9/54, 9/55, 9/56, 9/57, 9/58, 9/59, 9/60, 9/61, 9/62, 9/63, 9/64, 9/65, 9/66, 9/67, 9/68, 9/69, 9/70, 9/71, 9/72, 9/73, 9/74, 9/75, 9/76, 9/77, 9/78, 9/79, 9/80, 9/81, 9/82, 9/83, 9/84, 9/85, 9/86, 9/87, 9/88, 9/89, 9/90, 9/91, 9/92, 9/93, 9/94, 9/95, 9/96, 9/97, 9/98, 9/99, 9/100, 9/101, 9/102, 9/103, 9/104, 9/105, 9/106, 9/107, 9/108, 9/109, 9/110, 9/111, 9/112, 9/113, 9/114, 9/115, 9/116, 9/117, 9/118, 9/119, 9/120, 9/121, 9/122, 9/123, 9/124, 9/125, 9/126, 9/127, 9/128, 9/129, 9/130, 9/131, 9/132, 9/133, 9/134, 9/135, 9/136, 9/137, 9/138, 9/139, 9/140, 9/141, 9/142, 9/143, 9/144, 9/145, 9/146, 9/147, 9/148, 9/149, 9/150, 9/151, 9/152, 9/153, 9/154, 9/155, 9/156, 9/157, 9/158, 9/159, 9/160, 9/161, 9/162, 9/163, 9/164, 9/165, 9/166, 9/167, 9/168, 9/169, 9/170, 9/171, 9/172, 9/173, 9/174, 9/175, 9/176, 9/177, 9/178, 9/179, 9/180, 9/181, 9/182, 9/183, 9/184, 9/185, 9/186, 9/187, 9/188, 9/189, 9/190, 9/191, 9/192, 9/193, 9/194, 9/195, 9/196, 9/197, 9/198, 9/199, 9/200, 9/201, 9/202, 9/203, 9/204, 9/205, 9/206, 9/207, 9/208, 9/209, 9/210, 9/211, 9/212, 9/213, 9/214, 9/215, 9/216, 9/217, 9/218, 9/219, 9/220, 9/221, 9/222, 9/223, 9/224, 9/225, 9/226, 9/227, 9/228, 9/229, 9/230, 9/231, 9/232, 9/233, 9/234, 9/235, 9/236, 9/237, 9/238, 9/239, 9/240, 9/241, 9/242, 9/243, 9/244, 9/245, 9/246, 9/247, 9/248, 9/249, 9/250, 9/251, 9/252, 9/253, 9/254, 9/255, 9/256, 9/257, 9/258, 9/259, 9/260, 9/261, 9/262, 9/263, 9/264, 9/265, 9/266, 9/267, 9/268, 9/269, 9/270, 9/271, 9/272, 9/273, 9/274, 9/275, 9/276, 9/277, 9/278, 9/279, 9/280, 9/281, 9/282, 9/283, 9/284, 9/285, 9/286, 9/287, 9/288, 9/289, 9/290, 9/291, 9/292, 9/293, 9/294, 9/295, 9/296, 9/297, 9/298, 9/299, 9/300, 9/301, 9/302, 9/303, 9/304, 9/305, 9/306, 9/307, 9/308, 9/309, 9/310, 9/311, 9/312, 9/313, 9/314, 9/315, 9/316, 9/317, 9/318, 9/319, 9/320, 9/321, 9/322, 9/323, 9/324, 9/325, 9/326, 9/327, 9/328, 9/329, 9/330, 9/331, 9/332, 9/333, 9/334, 9/335, 9/336, 9/337, 9/338, 9/339, 9/340, 9/341, 9/342, 9/343, 9/344, 9/345, 9/346, 9/347, 9/348, 9/349, 9/350, 9/351, 9/352, 9/353, 9/354, 9/355, 9/356, 9/357, 9/358, 9/359, 9/360, 9/361, 9/362, 9/363, 9/364, 9/365, 9/366, 9/367, 9/368, 9/369, 9/370, 9/371, 9/372, 9/373, 9/374, 9/375, 9/376, 9/377, 9/378, 9/379, 9/380, 9/381, 9/382, 9/383, 9/384, 9/385, 9/386, 9/387, 9/388, 9/389, 9/390, 9/391, 9/392, 9/393, 9/394, 9/395, 9/396, 9/397, 9/398, 9/399, 9/400, 9/401, 9/402, 9/403, 9/404, 9/405, 9/406, 9/407, 9/408, 9/409, 9/410, 9/411, 9/412, 9/413, 9/414, 9/415, 9/416, 9/417, 9/418, 9/419, 9/420, 9/421, 9/422, 9/423, 9/424, 9/425, 9/426, 9/427, 9/428, 9/429, 9/430, 9/431, 9/432, 9/433, 9/434, 9/435, 9/436, 9/437, 9/438, 9/439, 9/440, 9/441, 9/442, 9/443, 9/444, 9/445, 9/446, 9/447, 9/448, 9/449, 9/450, 9/451, 9/452, 9/453, 9/454, 9/455, 9/456, 9/457, 9/458, 9/459, 9/460, 9/461, 9/462, 9/463, 9/464, 9/465, 9/466, 9/467, 9/468, 9/469, 9/470, 9/471, 9/472, 9/473, 9/474, 9/475, 9/476, 9/477, 9/478, 9/479, 9/480, 9/481, 9/482, 9/483, 9/484, 9/485, 9/486, 9/487, 9/488, 9/489, 9/490, 9/491, 9/492, 9/493, 9/494, 9/495, 9/496, 9/497, 9/498, 9/499, 9/500, 9/501, 9/502, 9/503, 9/504, 9/505, 9/506, 9/507, 9/508, 9/509, 9/510, 9/511, 9/512, 9/513, 9/514, 9/515, 9/516, 9/517, 9/518, 9/519, 9/520, 9/521, 9/522, 9/523, 9/524, 9/525, 9/526, 9/527, 9/528, 9/529, 9/530, 9/531, 9/532, 9/533, 9/534, 9/535, 9/536, 9/537, 9/538, 9/539, 9/540, 9/541, 9/542, 9/543, 9/544, 9/545, 9/546, 9/547, 9/548, 9/549, 9/550, 9/551, 9/552, 9/553, 9/554, 9/555, 9/556, 9/557, 9/558, 9/559, 9/560, 9/561, 9/562, 9/563, 9/564, 9/565, 9/566, 9/567, 9/568, 9/569, 9/570, 9/571, 9/572, 9/573, 9/574, 9/575, 9/576, 9/577, 9/578, 9/579, 9/580, 9/581, 9/582, 9/583, 9/584, 9/585, 9/586, 9/587, 9/588, 9/589, 9/590, 9/591, 9/592, 9/593, 9/594, 9/595, 9/596, 9/597, 9/598, 9/599, 9/600, 9/601, 9/602, 9/603, 9/604, 9/605, 9/606, 9/607, 9/608, 9/609, 9/610, 9/611, 9/612, 9/613, 9/614, 9/615, 9/616, 9/617, 9/618, 9/619, 9/620, 9/621, 9/622, 9/623, 9/624, 9/625, 9/626, 9/627, 9/628, 9/629, 9/630, 9/631, 9/632, 9/633, 9/634, 9/635, 9/636, 9/637, 9/638, 9/639, 9/640, 9/641, 9/642, 9/643, 9/644, 9/645, 9/646, 9/647, 9/648, 9/649, 9/650, 9/651, 9/652, 9/653, 9/654, 9/655, 9/656, 9/657, 9/658, 9/659, 9/660, 9/661, 9/662, 9/663, 9/664, 9/665, 9/666, 9/667, 9/668, 9/669, 9/670, 9/671, 9/672, 9/673, 9/674, 9/675, 9/676, 9/677, 9/678, 9/679, 9/680, 9/681, 9/682, 9/683, 9/684, 9/685, 9/686, 9/687, 9/688, 9/689, 9/690, 9/691, 9/692, 9/693, 9/694, 9/695, 9/696, 9/697, 9/698, 9/699, 9/700, 9/701, 9/702, 9/703, 9/704, 9/705, 9/706, 9/707, 9/708, 9/709, 9/710, 9/711, 9/712, 9/713, 9/714, 9/715, 9/716, 9/717, 9/718, 9/719, 9/720, 9/721, 9/722, 9/723, 9/724, 9/725, 9/726, 9/727, 9/728, 9/729, 9/730, 9/731, 9/732, 9/733, 9/734, 9/735, 9/736, 9/737, 9/738, 9/739, 9/740, 9/741, 9/742, 9/743, 9/744, 9/745, 9/746, 9/747, 9/748, 9/749, 9/750, 9/751, 9/752, 9/753, 9/754, 9/755, 9/756, 9/757, 9/758, 9/759, 9/760, 9/761, 9/762, 9/763, 9/764, 9/765, 9/766, 9/767, 9/768, 9/769, 9/770, 9/771, 9/772, 9/773, 9/774, 9/775, 9/776, 9/777, 9/778, 9/779, 9/780, 9/781, 9/782, 9/783, 9/784, 9/785, 9/786, 9/787, 9/788, 9/789, 9/790, 9/791, 9/792, 9/793, 9/794, 9/795, 9/796, 9/797, 9/798, 9/799, 9/800, 9/801, 9/802, 9/803, 9/804, 9/805, 9/806, 9/807, 9/808, 9/809, 9/810, 9/811, 9/812, 9/813, 9/814, 9/815, 9/816, 9/817, 9/818, 9/819, 9/820, 9/821, 9/822, 9/823, 9/824, 9/825, 9/826, 9/827, 9/828, 9/829, 9/830, 9/831, 9/832, 9/833, 9/834, 9/835, 9/836, 9/837, 9/838, 9/839, 9/840, 9/841, 9/842, 9/843, 9/844, 9/845, 9/846, 9/847, 9/848, 9/849, 9/850, 9/851, 9/852, 9/853, 9/854, 9/855, 9/856, 9/857, 9/858, 9/859, 9/860, 9/861, 9/862, 9/863, 9/864, 9/865, 9/866, 9/867, 9/868, 9/869, 9/870, 9/871, 9/872, 9/873, 9/874, 9/875, 9/876, 9/877, 9/878, 9/879, 9/880, 9/881, 9/882, 9/883, 9/884, 9/885, 9/886, 9/887, 9/888, 9/889, 9/890, 9/891, 9/892, 9/893, 9/894, 9/895, 9/896, 9/897, 9/898, 9/899, 9/900, 9/901, 9/902, 9/903, 9/904, 9/905, 9/906, 9/907, 9/908, 9/909, 9/910, 9/911, 9/912, 9/913, 9/914, 9/915, 9/916, 9/917, 9/918, 9/919, 9/920, 9/921, 9/922, 9/923, 9/924, 9/925, 9/926, 9/927, 9/928, 9/929, 9/930, 9/931, 9/932, 9/933, 9/934, 9/935, 9/936, 9/937, 9/938, 9/939, 9/940, 9/941, 9/942, 9/943, 9/944, 9/945, 9/946, 9/947, 9/948, 9/949, 9/950, 9/951, 9/952, 9/953, 9/954, 9/955, 9/956, 9/957, 9/958, 9/959, 9/960, 9/961, 9/962, 9/963, 9/964, 9/965, 9/966, 9/967, 9/968, 9/969, 9/970, 9/971, 9/972, 9/973, 9/974, 9/975, 9/976, 9/977, 9/978, 9/979, 9/980, 9/981, 9/982, 9/983, 9/984, 9/985, 9/986, 9/987, 9/988, 9/989, 9/990, 9/991, 9/992, 9/993, 9/994, 9/995, 9/996, 9/997, 9/998, 9/999, 9/1000, 9/1001, 9/1002, 9/1003, 9/1004, 9/1005, 9/1006, 9/1007, 9/1008, 9/1009, 9/1010, 9/1011, 9/1012, 9/1013, 9/1014, 9/1015, 9/1016, 9/1017, 9/1018, 9/1019, 9/1020, 9/1021, 9/1022, 9/1023, 9/1024, 9/1025, 9/1026, 9/1027, 9/1028, 9/1029, 9/1030, 9/1031, 9/1032, 9/1033, 9/1034, 9/1035, 9/1036, 9/1037, 9/1038, 9/1039, 9/1040, 9/1041, 9/1042, 9/1043, 9/1044, 9/1045, 9/1046, 9/1047, 9/1048, 9/1049, 9/1050, 9/1051, 9/1052, 9/1053, 9/1054, 9/1055, 9/1056, 9/1057, 9/1058, 9/1059, 9/1060, 9/1061, 9/1062, 9/1063, 9/1064, 9/1065, 9/1066, 9/1067, 9/1068, 9/1069, 9/1070, 9/1071, 9/1072, 9/1073, 9/1074, 9/1075, 9/1076, 9/1077, 9/1078, 9/1079, 9/1080, 9/1081, 9/1082, 9/1083, 9/1084, 9/1085, 9/1086, 9/1087, 9/1088, 9/1089, 9/1090, 9/1091, 9/1092, 9/1093, 9/1094, 9/1095, 9/1096, 9/1097, 9/1098, 9/1099, 9/1100, 9/1101, 9/1102, 9/1103, 9/1104, 9/1105, 9/1106, 9/1107, 9/1108, 9/1109, 9/1110, 9/1111, 9/1112, 9/1113, 9/1114, 9/1115, 9/1116, 9/1117, 9/1118, 9/1119, 9/1120, 9/1121, 9/1122, 9/1123, 9/1124, 9/1125, 9/1126, 9/1127, 9/1128, 9/1129, 9/1130, 9/1131, 9/1132, 9/1133, 9/1134, 9/1135, 9/1136, 9/1137, 9/1138, 9/1139, 9/1140, 9/1141, 9/1142, 9/1143, 9/1144, 9/1145, 9/1146, 9/1147, 9/1148, 9/1149, 9/1150, 9/1151, 9/1152, 9/1153, 9/1154, 9/1155, 9/1156, 9/1157, 9/1158, 9/1159, 9/1160, 9/1161, 9/1162, 9/1163, 9/1164, 9/1165, 9/1166, 9/1167, 9/1168, 9/1169, 9/1170, 9/1171, 9/1172, 9/1173, 9/1174, 9/1175, 9/1176, 9/1177, 9/1178, 9/1179, 9/1180, 9/1181, 9/1182, 9/1183, 9/1184, 9/1185, 9/1186, 9/1187, 9/1188, 9/1189, 9/1190, 9/1191, 9/1192, 9/1193, 9/1194, 9/1195, 9/1196, 9/1197, 9/1198, 9/1199, 9/1200, 9/1201, 9/1202, 9/1203, 9/1204, 9/1205, 9/1206, 9/1207, 9/1208, 9/1209, 9/1210, 9/1211, 9/1212, 9/1213, 9/1214, 9/1215, 9/1216, 9/1217, 9/1218, 9/1219, 9/1220, 9/1221, 9/1222, 9/1223, 9/1224, 9/1225, 9/1226, 9/1227, 9/1228, 9/1229, 9/1230, 9/1231, 9/1232, 9/1233, 9/1234, 9/1235, 9/1236, 9/1237, 9/1238, 9/1239, 9/1240, 9/1241, 9/1242, 9/1243, 9/1244, 9/1245, 9/1246, 9/1247, 9/1248, 9/1249, 9/1250, 9/1251, 9/1252, 9/1253, 9/1254, 9/1255, 9/1256, 9/1257, 9/1258, 9/1259, 9/1260, 9/1261, 9/1262, 9/1263, 9/1264, 9/1265, 9/1266, 9/1267, 9/1268, 9/1269, 9/1270, 9/1271, 9/1272, 9/1273, 9/1274, 9/1275, 9/1276, 9/1277, 9/1278, 9/1279, 9/1280, 9/1281, 9/1282, 9/1283, 9/1284, 9/1285, 9/1286, 9/1287, 9/1288, 9/1289, 9/1290, 9/1291, 9/1292, 9/1293, 9/1294, 9/1295, 9/1296, 9/1297, 9/1298, 9/1299, 9/1300, 9/1301, 9/1302, 9/1303, 9/1304, 9/1305, 9/1306, 9/1307, 9/1308, 9/1309, 9/1310, 9/1311, 9/1312, 9/1313, 9/1314, 9/1315, 9/1316, 9/1317, 9/1318, 9/1319, 9/1320, 9/1321, 9/1322, 9/1323, 9/1324, 9/1325, 9/1326, 9/1327, 9/1328, 9/1329, 9/1330, 9/1331, 9/1332, 9/1333, 9/1334, 9/1335, 9/1336, 9/1337, 9/1338, 9/1339, 9/1340, 9/1341, 9/1342, 9/1343, 9/1344, 9/1345, 9/1346, 9/1347, 9/1348, 9/1349, 9/1350, 9/1351, 9/1352, 9/1353, 9/1354, 9/1355, 9/1356, 9/1357, 9/1358, 9/1359, 9/1360, 9/1361, 9/1362, 9/1363, 9/1364, 9/1365, 9/1366, 9/1367, 9/1368, 9/1369, 9/1370, 9/1371, 9/1372, 9/1373, 9/1374, 9/1375, 9/1376, 9/1377, 9/1378, 9/1379, 9/1380, 9/1381, 9/1382, 9/1383, 9/1384, 9/1385, 9